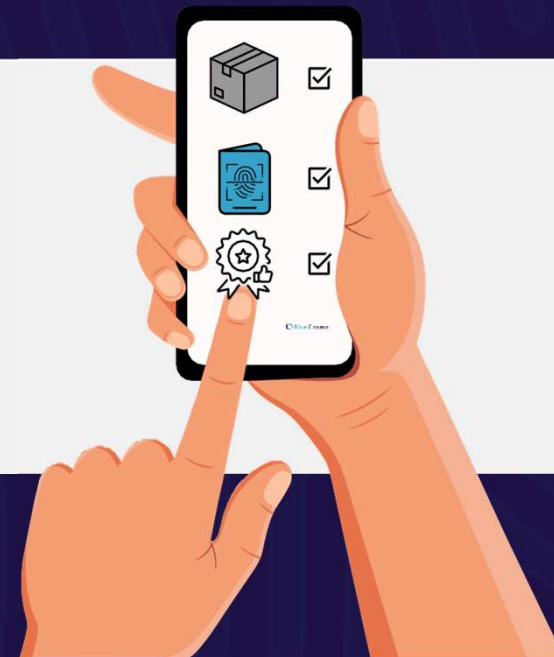
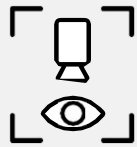


Genesis by Blue Cromos

**AI-powered brand protection &
supply chain management**



Why Blue Cromos?

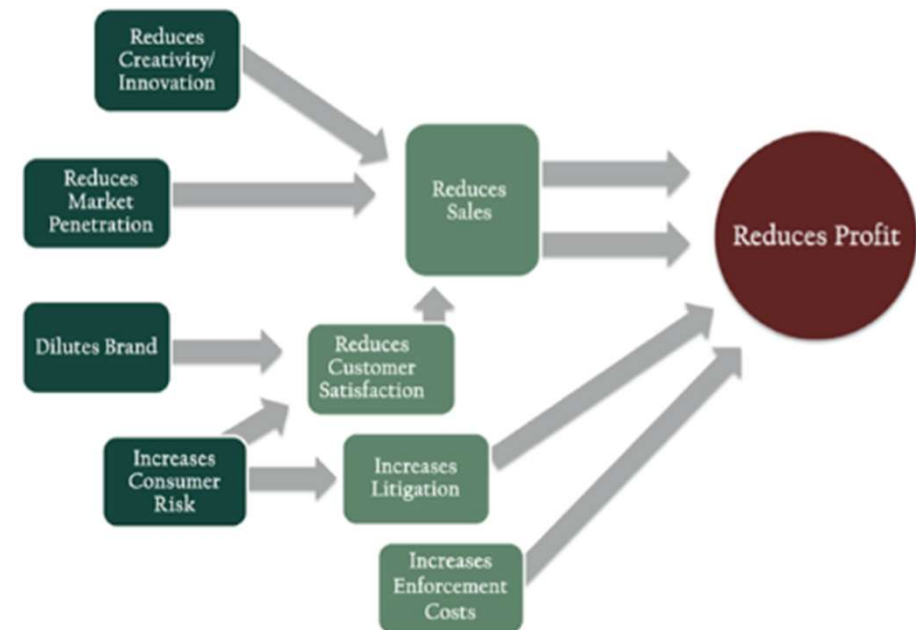
Brand protection - Increasingly important



Growing requirements on
transparency and environmental
impact tracking.

The counterfeit market is growing
12,5% each year and will reach
\$211,3 billion by 2026.

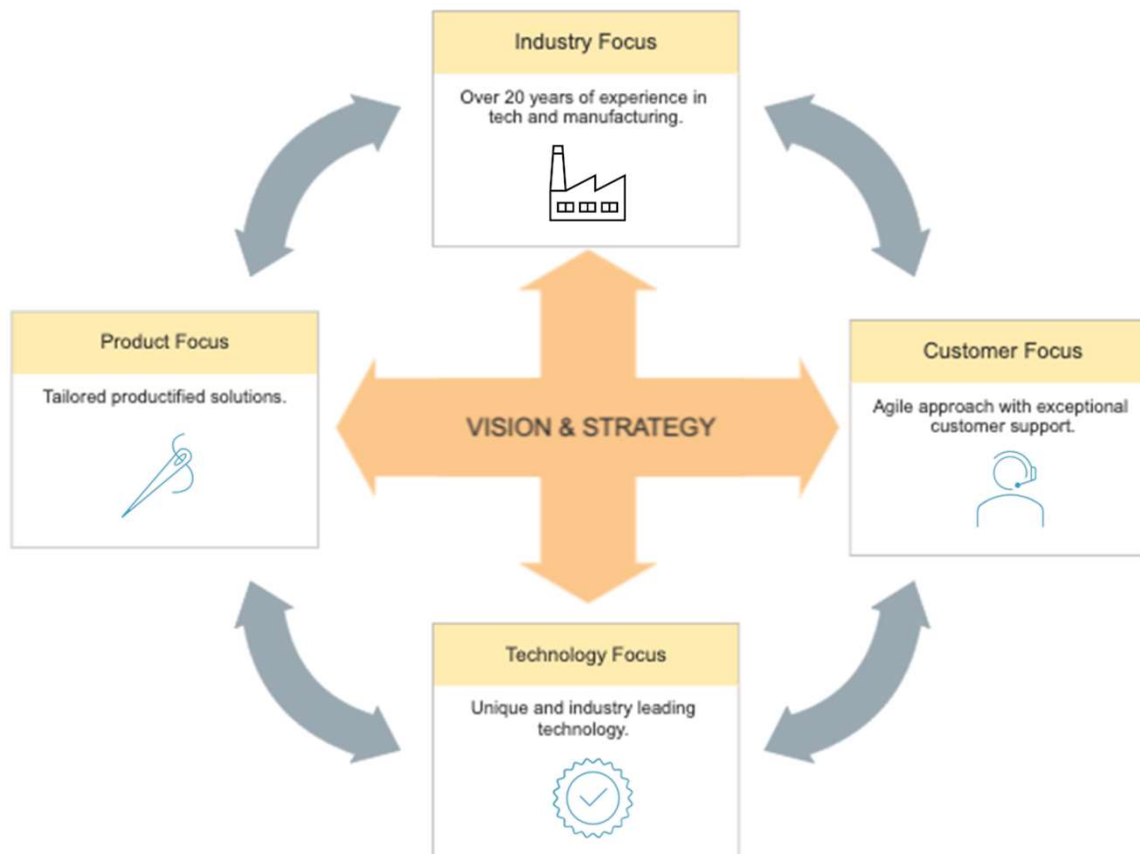
Conventional authentication
methods are limited.



*Center for anti-counterfeiting and product protection

Who We Are

Dedicated brand protection experts



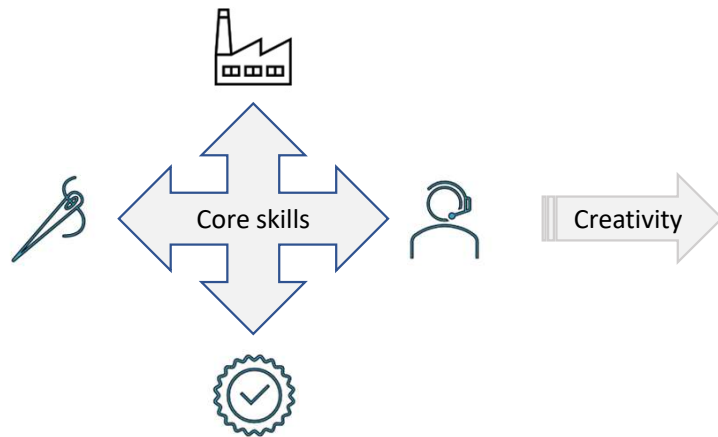
A **young** company made up of **experienced** people.

We know the industry inside out through decades of **industry** experience.

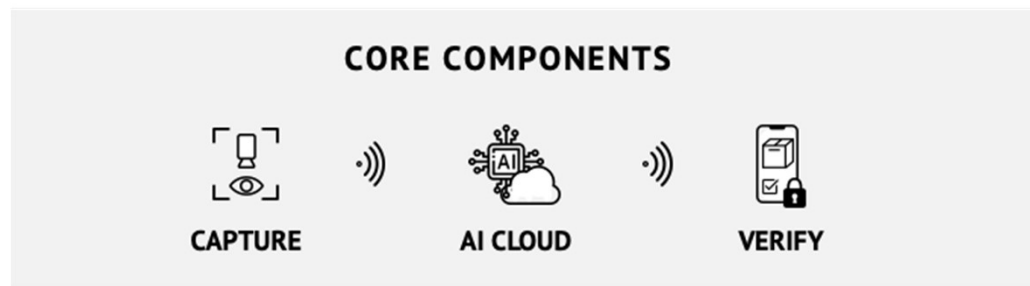
What We Do

Embracing brand protection and product authentication needs

By utilizing the latest tools, technology and thinking, we ensure secure, **future proof solutions** that are fit for purpose also over time.



Solutions



Meet BC Genesis

Fingerprinting (Digital Twinning)

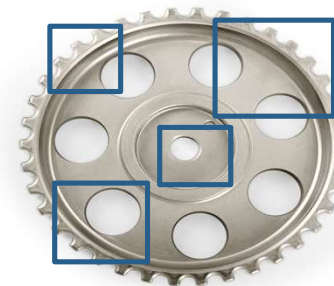
- Patented **cloud-based** platform that uses **AI** to determine areas of interest on a product and/or its packaging where item-specific features can be observed and recorded.
- Offering **fingerprint** technology for multiple products **without** the need to **change** products or processes.
- The **authentication** of **products** can then be conducted throughout the supply chain offering end-to-end traceability.
- The system is **self-learning** with **refinements** to the **process automatically** and retroactively applied to the initial sample, so that every item from the very first is uniquely identifiable.



Item in packaging –
identifiable by unique
features and barcode



Item with markings –
identifiable by unique
features and DMC code

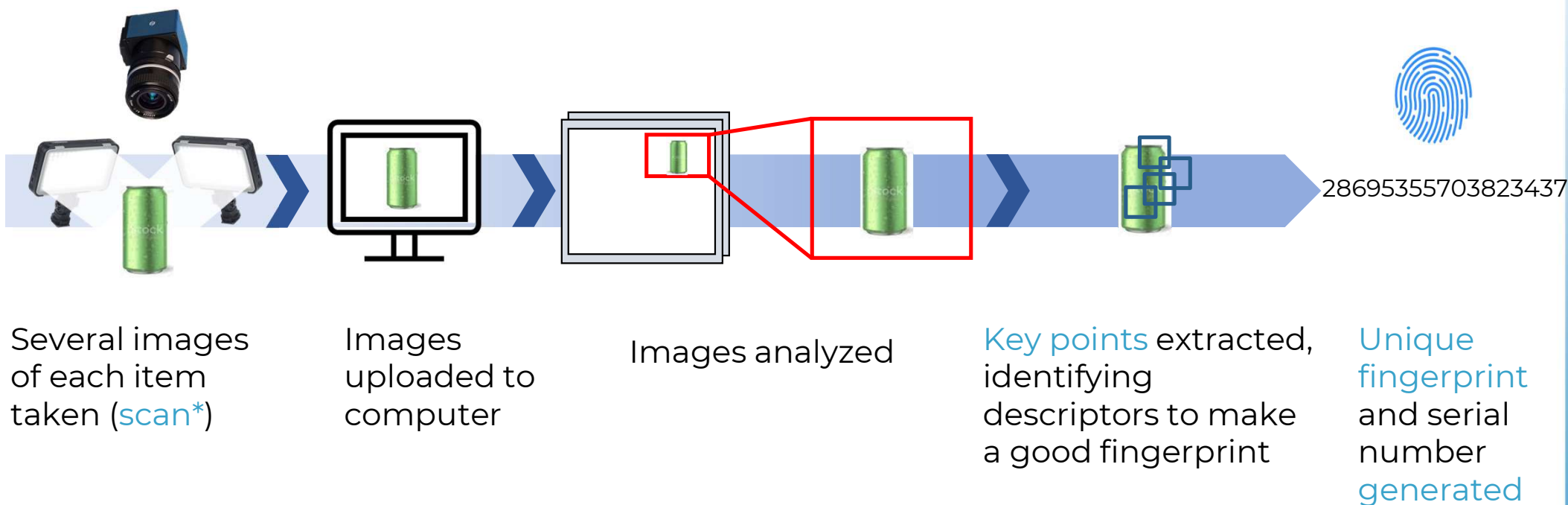


Item without markings –
identifiable by unique
features



BC Genesis – how it works

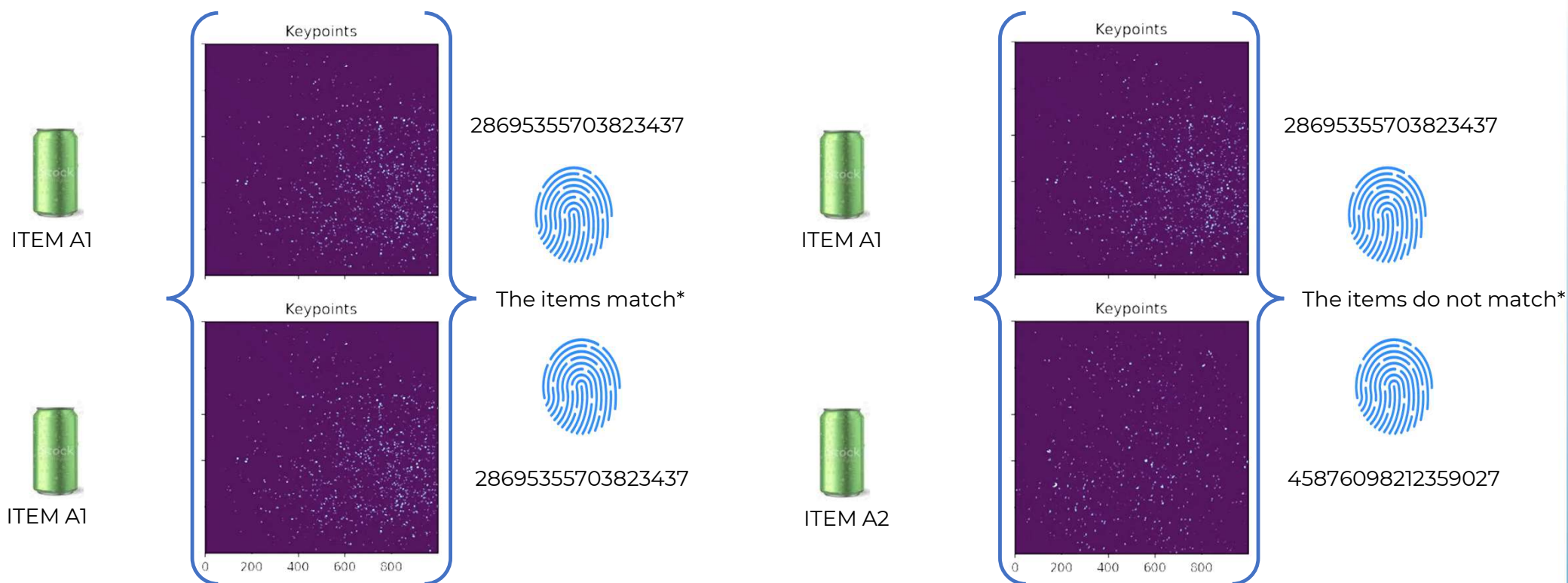
Identification process



*Genesis optically captures the natural surface "fingerprint" of individual products via a standard industry camera.

BC Genesis – how it works

Differentiation process



*The authentication of products can then be conducted throughout the supply chain via a standard industry camera or a simple guided smartphone application.

What BC Genesis 3 Offers

Easy-to-integrate AI-driven solutions



Quality Assurance that uses imaging technology to detect and log product manufacturing tolerances.



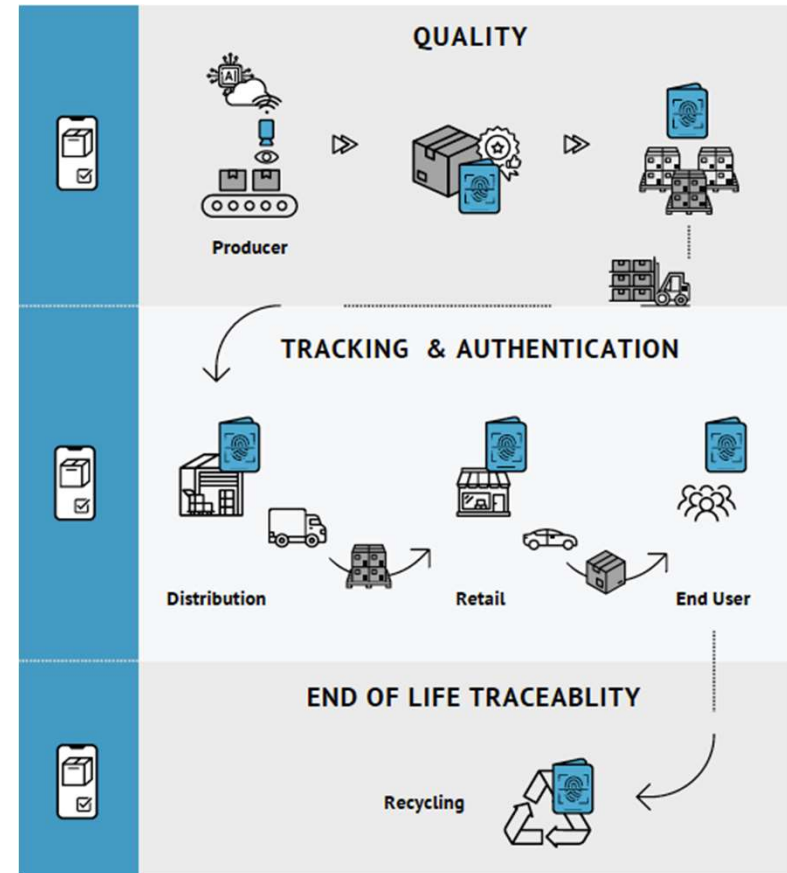
Digital Product Passport (DPP) for each individual item produced.



Track and Trace for each individual item throughout the supply chain.



Secure Authentication that helps authenticate original items throughout the supply chain.

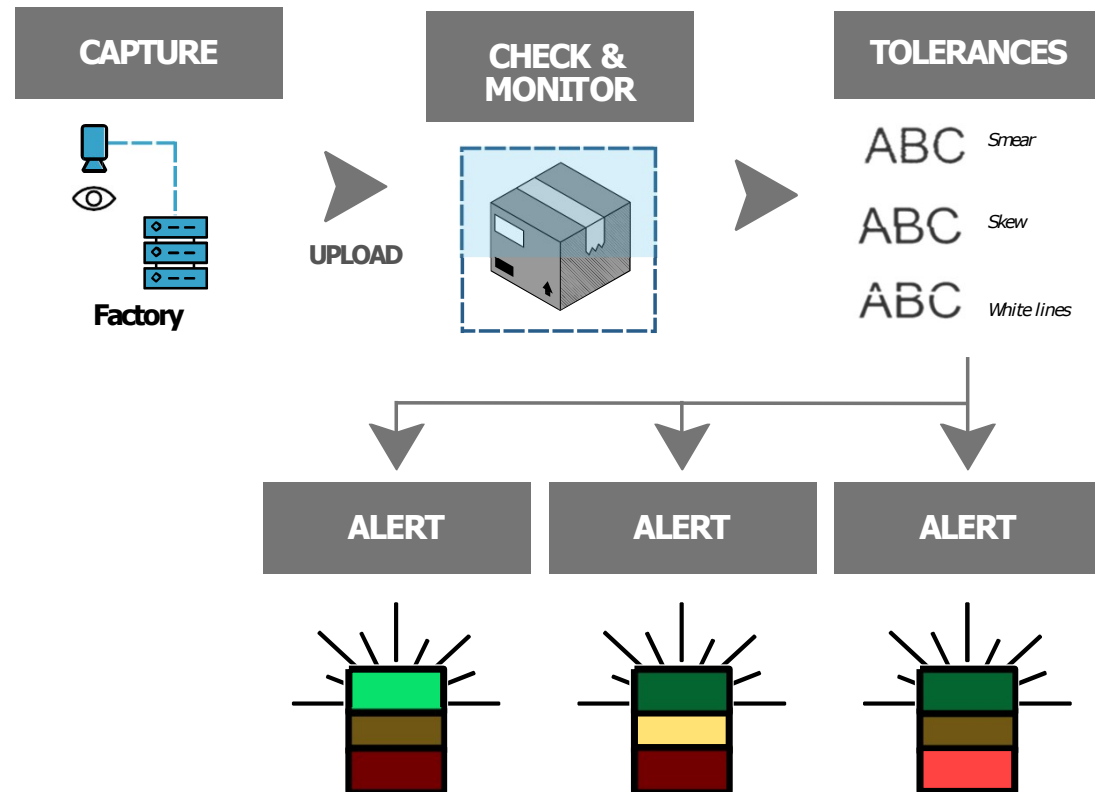


BC isQuality

Quality Assurance

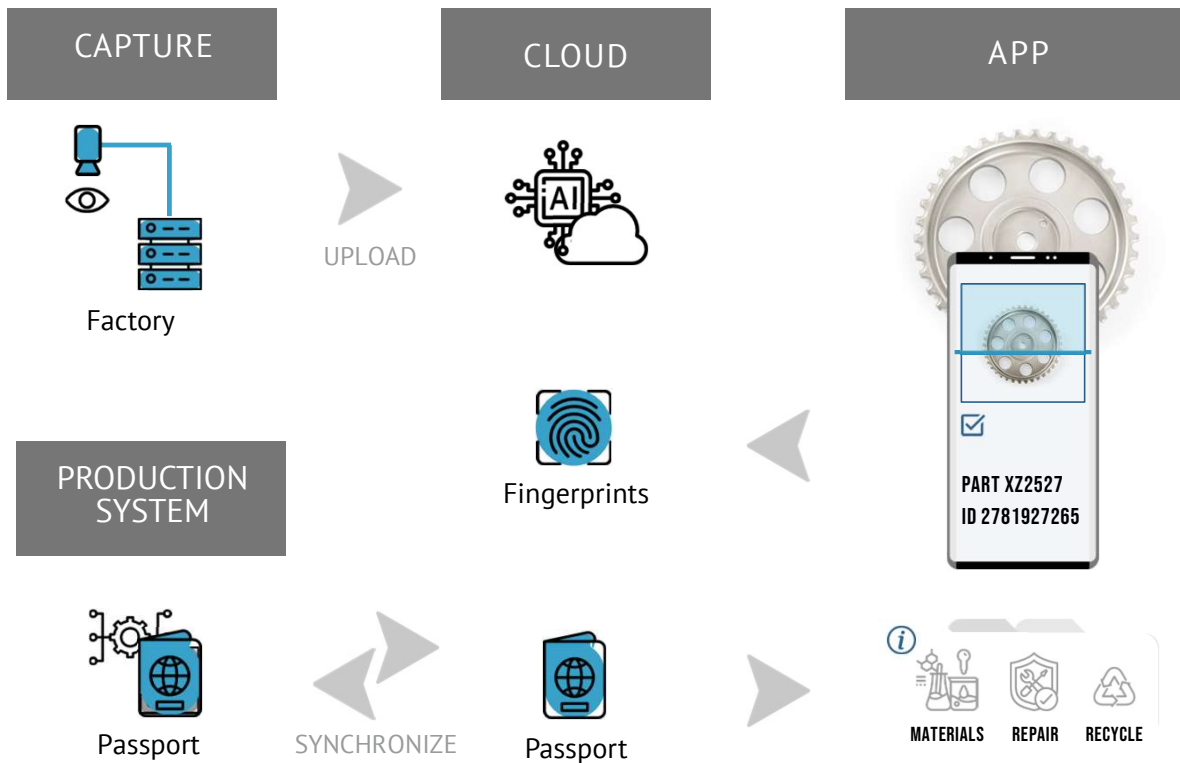


- ✓ Reduce **downtime** instantly by detecting and rectifying quality issues
- ✓ Cut **waste** by proactively identifying the need for equipment maintenance
- ✓ Save **time and resources** by catching printing errors in real-time
- ✓ Improve **customer satisfaction** and reduce complaints
- ✓ Consistently meet **regulatory compliance** for packaging quality



BC isPassport & isTrax

Product Identity and Tracking



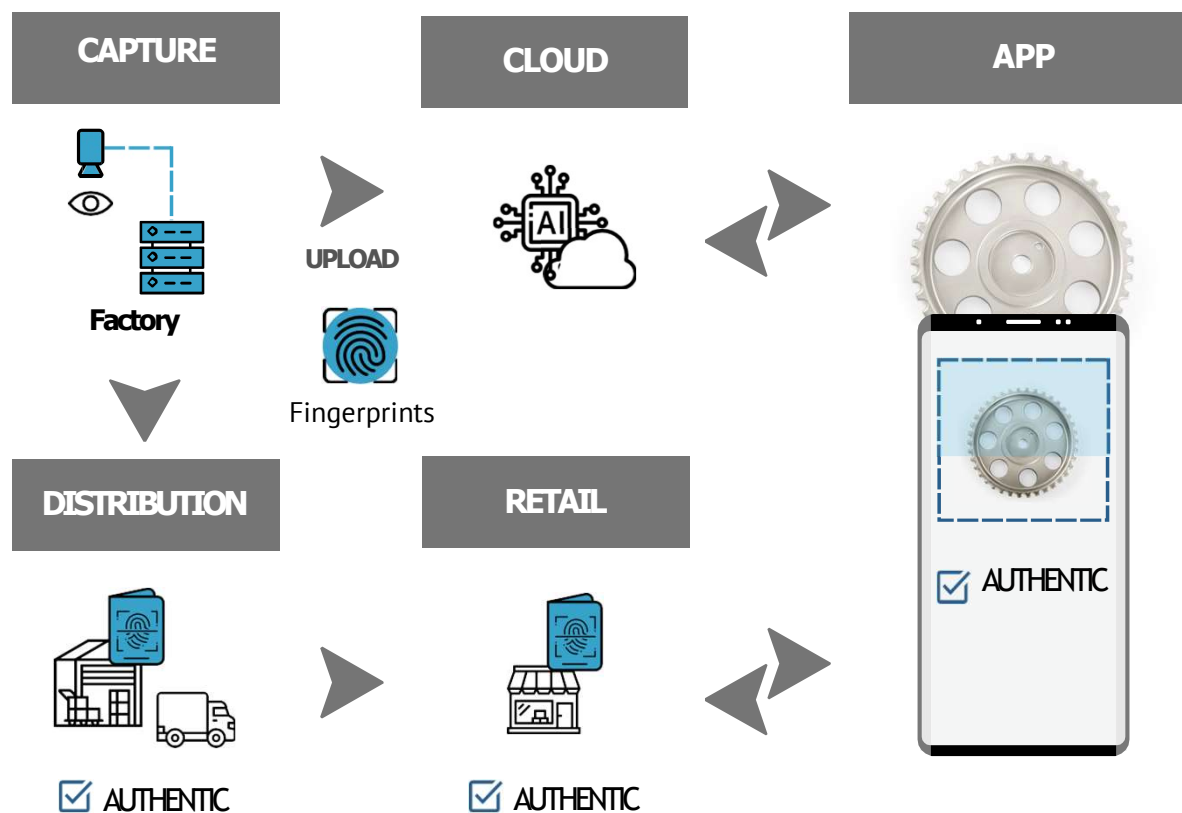
- ✓ Streamline supply chain processes and reduce labor costs
- ✓ Make products **safer** with reliable and verified data
- ✓ Enhance **recycling** processes with improved component verification
- ✓ Maximize **traceability** with digital product passports (DPP)
- ✓ Build consumer **trust** with improved transparency and open sustainability data

BC isAuthentic

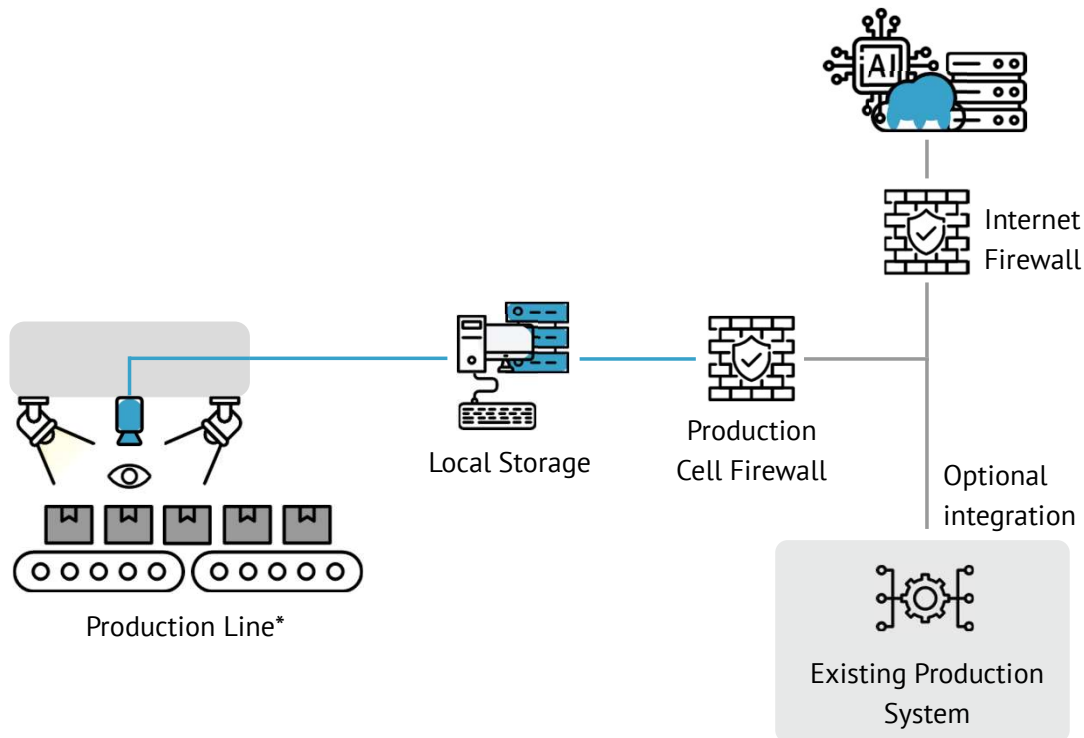
Authenticity Reassurance



- ✓ Eliminate counterfeit risks with accurate **digital fingerprints**
- ✓ Fast, **effortless installation**, no need for changes to the product or packaging
- ✓ **Verify original** products with ease, anywhere in the logistics chain
- ✓ **Simple and quick** authentication with intuitive mobile app
- ✓ **Catch counterfeited** goods



System Overview



Standards	Description
RAMI 4.0	Reference Architectural Model Industrie 4.0. RAMI is a service-oriented architecture for industry, combining IT and other components in a layer and lifecycle model structured like a layered 3D cube. It breaks down complex processes in to easy-to-understand packages.
Digital Twin Technology	Digital Twin technology creates a virtual representation of a product that uses real-time data track its progress from creation to recycling. Blue Croma Platform creates a digital twin of every item produced. The twin can be identified and validated from an ID label or from visual characteristics alone.
Blockchain	Blockchain combines with Digital Twin technology to provide a cost-effective and scalable solution for data tracking through blockchain ledger traceability.
GS1	Internationally standardized data identification, capture & sharing for millions of products worldwide.
Cloud	Microsoft Azure, Amazon Web Services available as option Dimensioned to agreed throughput

BLUE CROMOS

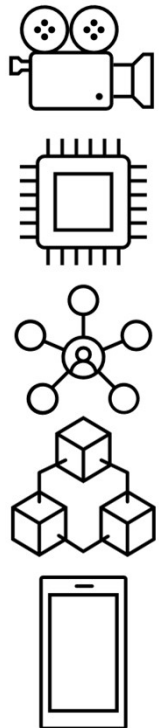
12

*Existing cameras mounted in the assembly or packaging line may be used depending on position and angle

*Depending on the factory and cycle times rack mounted NAS with disks may be used

BC Genesis 3

Specs, features, and computer requirements*



Camera	Specification
Resolution	2 Megapixel minimum; 5 Megapixel typically optimal
Frame speed	Recommend 10x item rate on production line
Interface	USB or Ethernet with PoE
Recommended models	Basler, Cognex, Keyence
Computer	Specification
Operating System	Windows 10 or later; Linux available as option
Minimum CPU	1 gigahertz (GHz) or faster with 2 or more cores on a compatible 64-bit processor or System on a Chip (SoC)
Minimum memory	16GB
Storage Capacity	Volume dependent (approx 60 kilobytes per item scanned)
Storage Type	Internal, Hyper-V Stack or other Edge component
Connectivity	USB3, Gigabit Ethernet
VPN	Secure Connect VPN to AI Cloud
Graphics	Compatible with DirectX 12 or later with WDDM 2.0 driver
Firewall	Specification
Pre-configured to work with:	Siemens Shop Floor LAN Firewall, Phoenix Contact Mguard
Code Reader	Specification
Pre-configured to work with:	Barcode, QR, DMC, Blockchain, NFT
Phone	Specification
Pre-configured to work with:	Android 9 or later
	Samsung Galaxy 10, Google Pixel 4 or later

*Minimum system requirements for installing, certain features may require specific hardware

BC Genesis applied

Pre-configured for a variety of verticals



AUTOMOTIVE



PHARMACEUTICAL

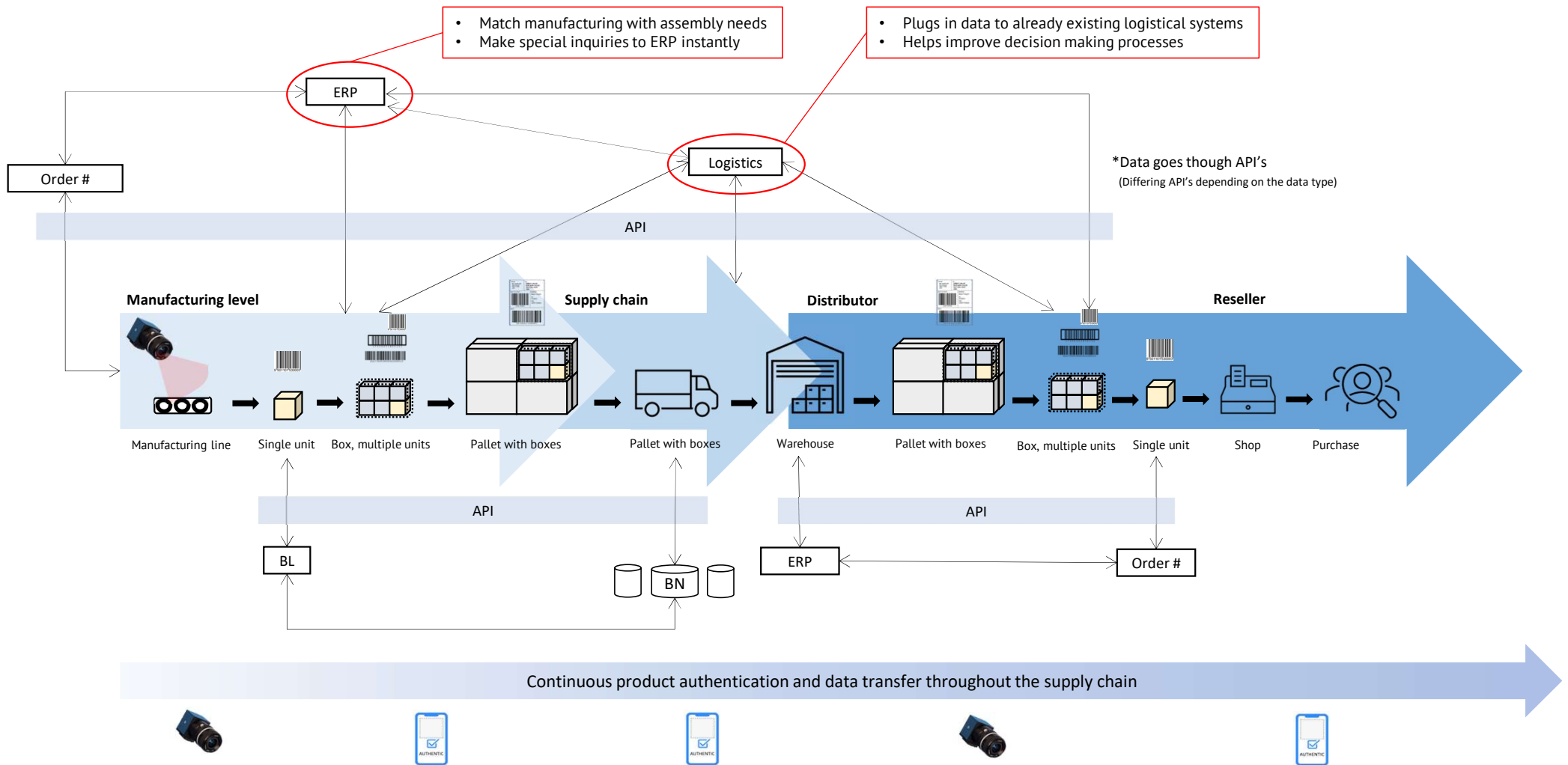


CONSUMER GOODS



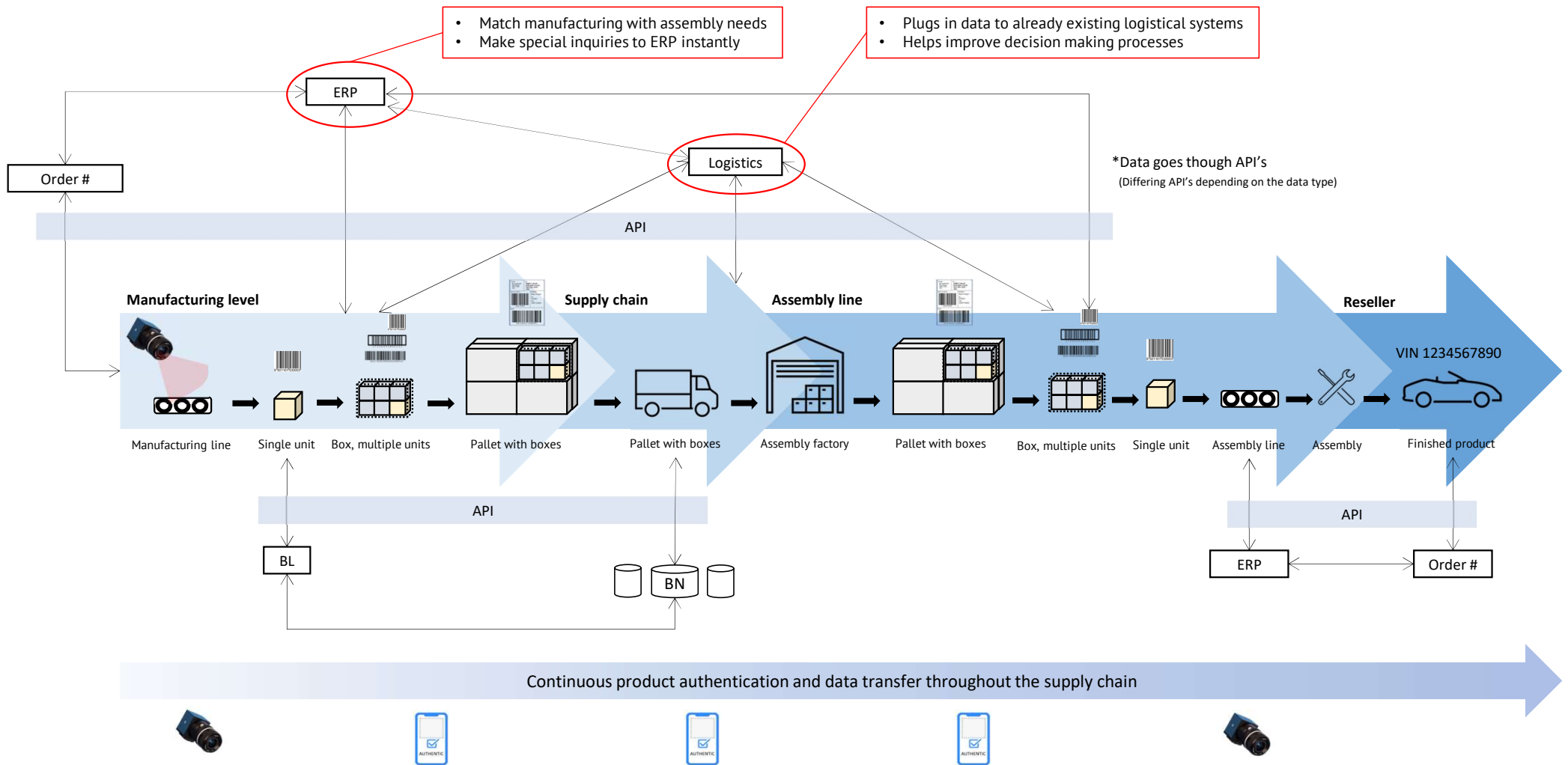
BC Genesis applied

Example consumer goods



BC Genesis applied

Example automotive



Genesis by Blue Cromos

AI-powered brand protection & supply chain management

Contact Us For More Information

